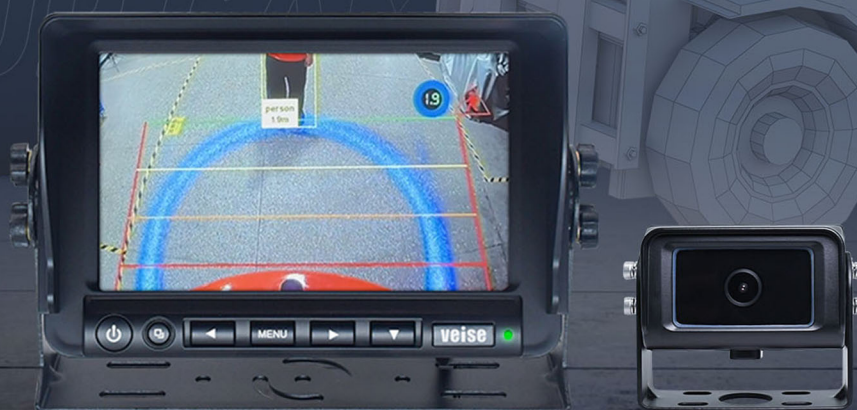


AI Pedestrian Vehicle Detection Camera System

Built-in three-stages audible and visual alarms



DI DI DI

Sound
Warning



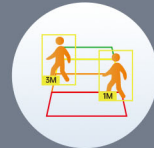
Three-levels
Warning Light



Built-in
AI Algorithm



Pedestrian and
vehicle detection



Detection
Range 0-5M



IP69K
Waterproof

System Overview

The AI pedestrian detection sound and light warning monitoring system not only eliminates the complex wiring process and installation of the reversing radar, but also the AI human analysis camera can capture the personnel in the monitoring area in real time compared to ordinary cameras, push warning signals to trigger the built-in buzzer sound and LED warning light of the display to warn the driver, improve the efficiency of vehicle operation and eliminate safety hazards to avoid economic losses. The AI pedestrian detection sound and light warning monitoring system is widely used in a variety of vehicles such as construction machinery vehicles, trucks, forklifts, buses, etc.



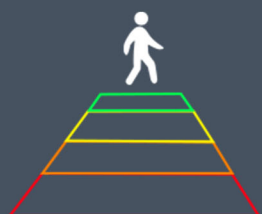
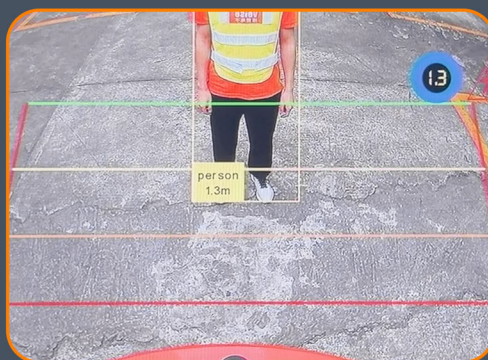
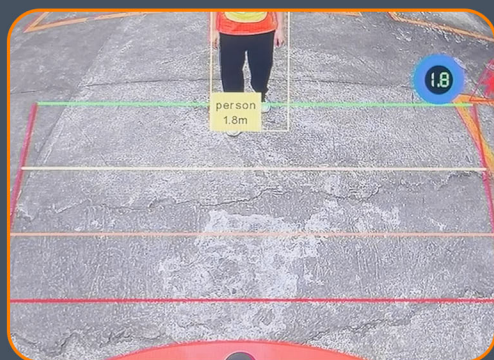
7-Inch HD Monitor

Built-in AI pedestrian detection
sound and light warning

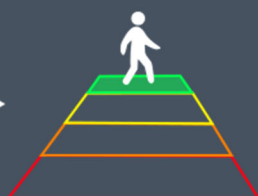


AI pedestrian detection three-levels sound and light warning

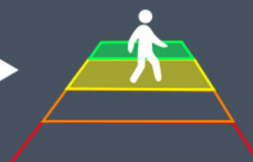
Built-in buzzer and red/yellow/green LED strobe light



Outside the
Detection Zone



Green:
Security Zone

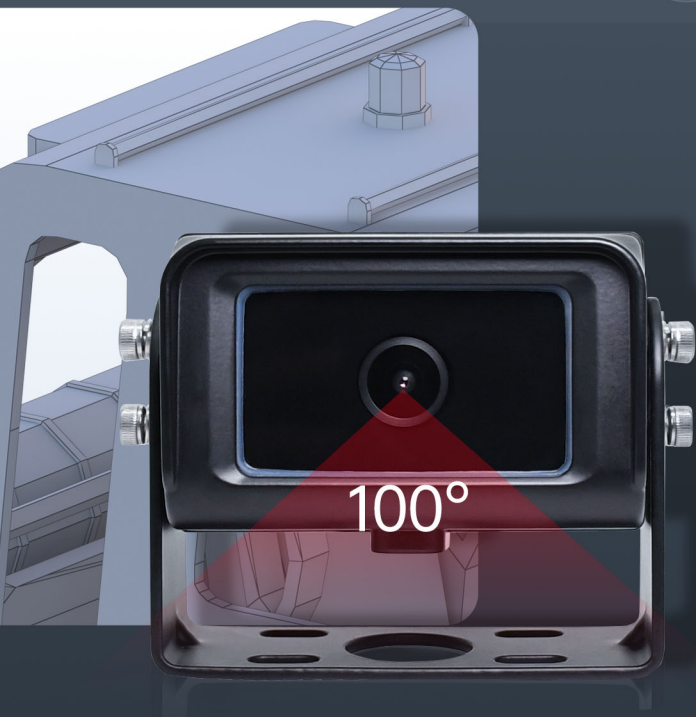


Yellow:
Cordon Zone

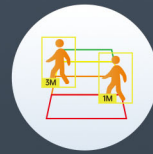


Red:
Danger Zone

AI Pedestrian Detection Camera



Pedestrian
Detection



Detection Range
0-5M



Starlight Full
Color



Built-in
AI Algorithm



Support Multi-Channels
Video Output



IP69K
Waterproof

Monitor Camera Model Selection



CHD-20B1MAI(720P)
CHD-20B2MAI(1080P)



CHD-19B1MAI(720P)
CHD-19B2MAI(1080P)



CHD-101MAI(720P)
CHD-102MAI(1080P)



MHD-7181J
7-inch waterproof audible
and visual warning monitor

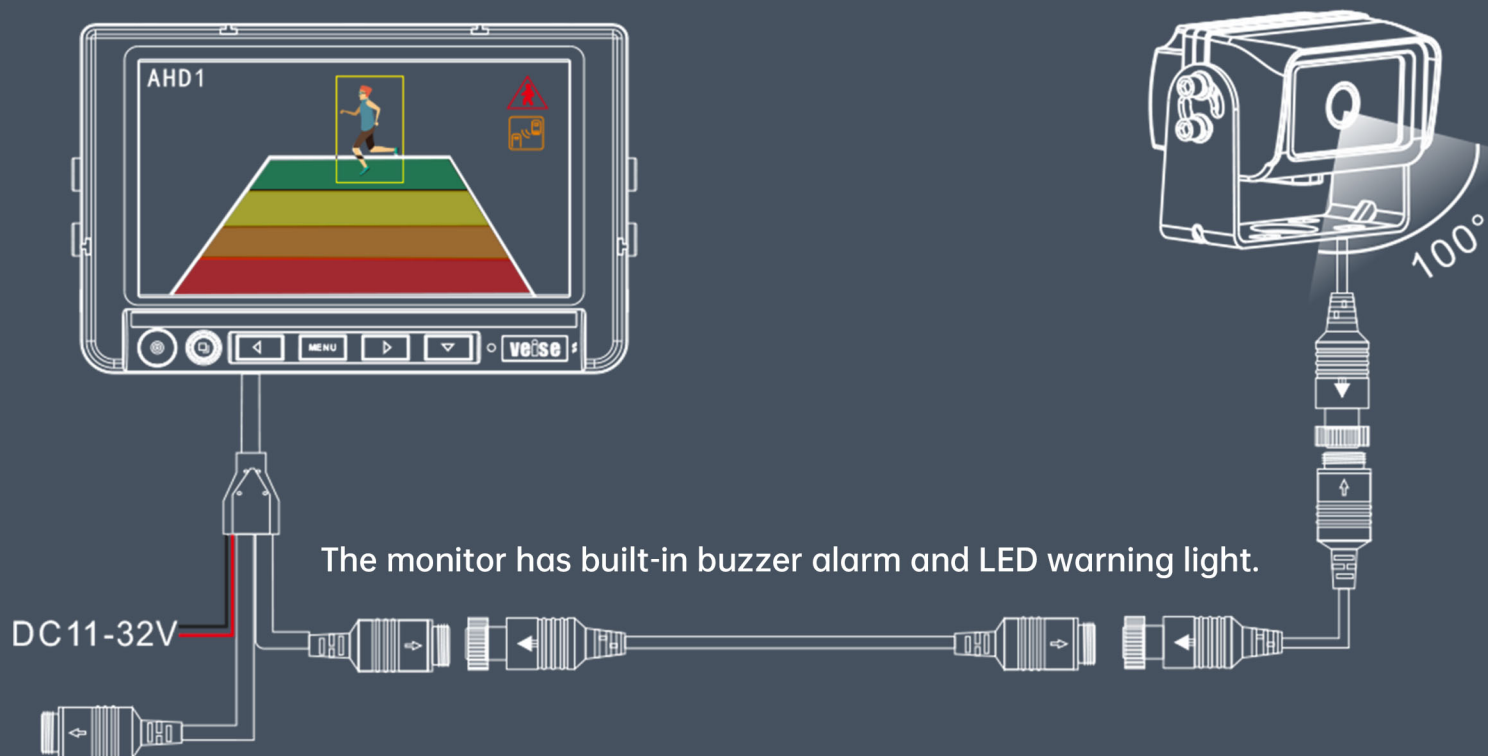
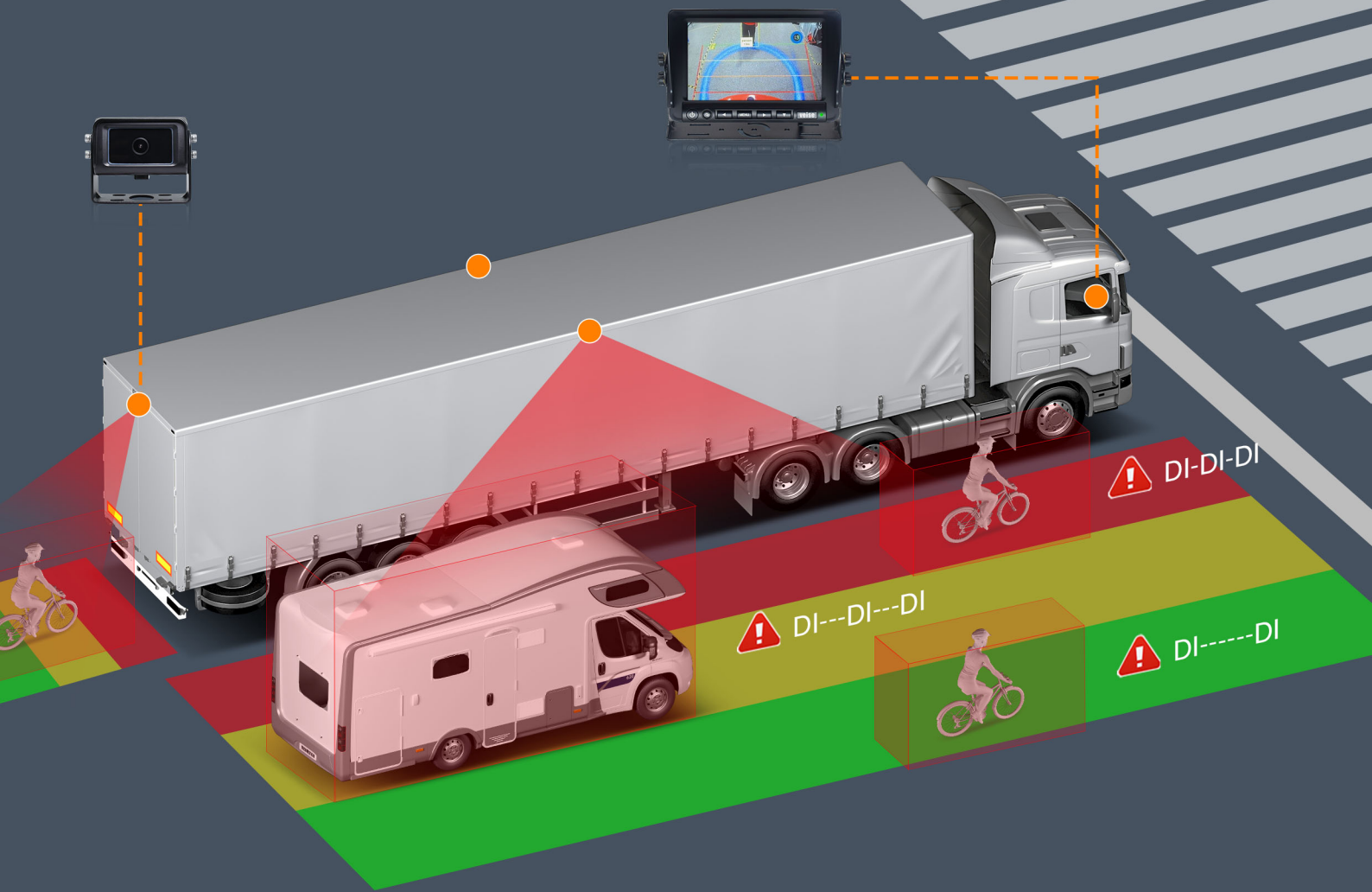


MHD-911J-RC
9-inch HD audible and
visual warning monitor



CHD-1051
10.1-inch sound and
light warning monitor

Connection installation diagram



Vehicle Application



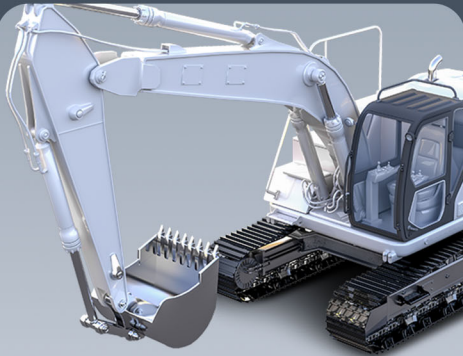
Stacker



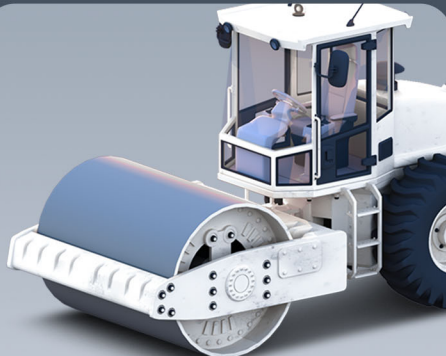
Bus



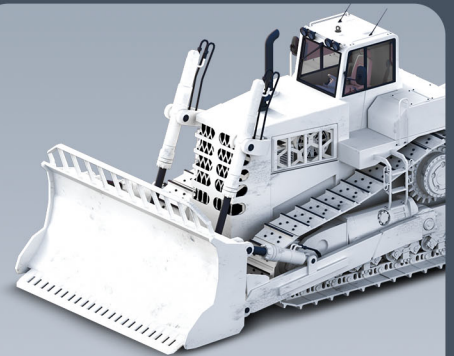
Lorry



Excavator



Road Roller



Dozer



Loader



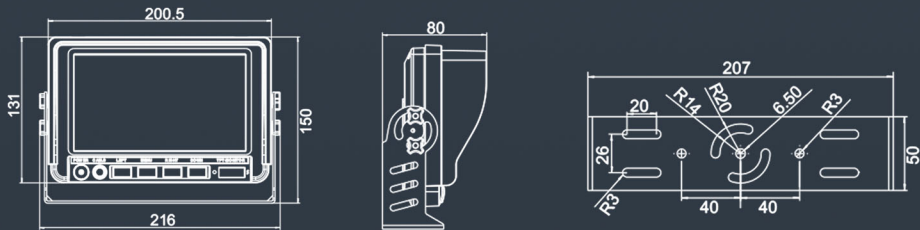
RV



Agricultural Machinery

Monitor Technical Parameters

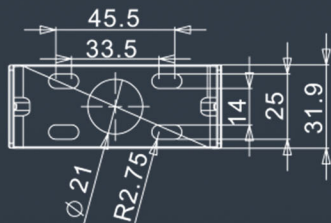
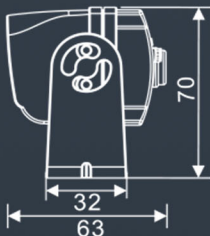
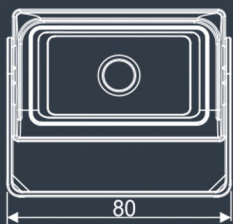
Model	MHD-771J
Monitor	7-inch IPS digital high-definition Monitor
Effective Pixels	1024×(RGB)×600
Viewing Angle (LR/UD)	L/R: 85/85 U/D: 85/85
Color Format	PAL/NTSC Automatic
Video Input	Maximum support 2 channels
Video Signal Input	2CH CVBS/720P/1080P
Sound Warning	DI DI DI (Buzzer)
AI LED Warning Light	● Green Light - Safety ● Yellow Light - Warning ● Red Light - Danger
OSD Menu Functions	Support single channel image flip left and right, up and down, multiple languages
Fuselage Lines	2m Connecting Line
Housing Material	ABS+PC
Surge and load dump protection	ISO16750-2 standard (24V system Us=174V, Ri=4Ω, Td=350ms)
Operating Temperature	-20℃ ~ +70℃
Storage Temperature	-30℃ ~ +80℃
Input Power	DC 11 ~ 32V
Seismic Rating	GB/T 2423.56-2018 Standard (Random 5G Vibration)
Size(mm)	225X150X85(mm) (Includes Sun Visor/Bracket)
Mounting Bracket	U-Shaped Bracket
Weight	800g



Unit: mm

AI Camera Technical Parameters

Model	CHD-121MAI / CHD-122MAI
Image Sensor	1/2.9 Color Cmos
Effective Pixels	1920(H) X 1080(V)
Field Of View	100°
AI Alarm I/O Output	1-4 Levels PWM
Detection Targets	Pedestrians/Non-Motorized Vehicles
Detection Image Ranging	0-5 Meters (Customizable)
Signal-To-Noise Ratio	≥48dB (AGC Off)
Video Output	AHD 1080P
Housing Material	Aluminum Alloy
Waterproof Rating	IP69K
Operating Voltage	DC12V±10%
Operating Temperature	-20°C To +60°C (RH95% Max)
Storage Temperature	-30°C To +70°C (RH95% Max)
Vibration Resistance	GB / T 2423.56-2018 Standard (Random 5G Vibration)
Connector Style	4-Pin Aviation Connector



Unit: mm